



Ken Robbins
Highway Administrator

702 K St.
Belleville, KS 66935

Phone: (785) 527-2235

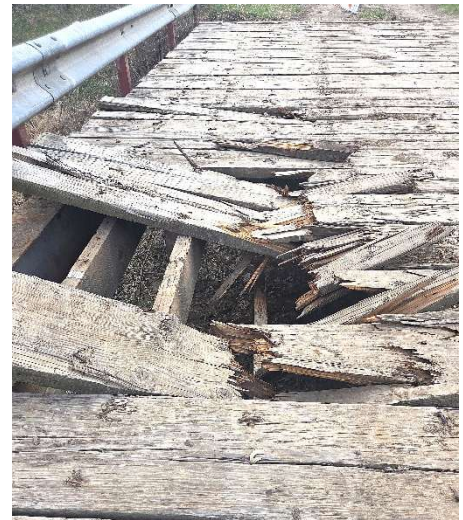
Fax: (785) 527-5335

Weekly Report to Commissioners

Department Reports on Non-Routine Activities

Roads and Bridges

- Bridge T-22.7 on Timber Road is maintained with a load limit of 6 tons. Most farm trucks and passenger vehicles are under 6 tons. The bridge sustained severe damage recently by an oversized load and remained unreported until a passenger vehicle called it in. It will remain closed until repairs can be made.
- 60 Road between Diamond and Birch Roads is nearing completion. Drainage improvements have been made and the subsurface of the road has been hardened with a mixture of rock and clay. The road still needs a gravel finish and that will be completed before April 1.
- Our latest CAT Motor Grader Re-build is going back into the Shop. Among the hundreds of items checked and double checked, an air filter cover was closed before performance testing at the plant without a filter in it. This was discovered during a 100hr service performed by our operator. The extent of the damage is unknown, but the motor grader is under warranty and CAT will provide a loaner until it can be fully certified again.
- The sidewalk along G Street in front of EMS and Health Departments is about 80% complete. Thank you, City of Belleville, for covering the material expenses for the concrete.
- KU's Technical Training Center will conduct an on-site Gravel Road and Street Maintenance Class for Republic County Motor Grader Operators. This class will be held on April 1 & 2. The training will include a day in a classroom setting and a day in the field. We expect this class to introduce some industry practices that will be helpful to our operations. The class will also facilitate discussions about development of an operating guide for Republic County that will help new employees gain proficiency more efficiently and achieve a more uniform product between our 10 motor grader districts. We have invited an operator employed by the City of Belleville to attend as well.



Community Concerns

ID	Description	Notes/Progress/Resolution	Status
Administration			
132	170 Road .0-.8 mile south of US-36; road & drainage improvements are needed.	Investigating solutions and impacts on adjacent properties	Open
45	Norway Lane; drainage improvements are needed.	KDOT is preparing a scope of work to improve KS-148 that passes through the community of Norway. Utilities have been located for a project we hope begins soon.	Open
Construction			
119	130 RD .55 West of Zeal RD South side; Trees/Brush need removed;	Utilities have been located. Landowner agrees to tree pile placement on his property.	Open
135	Bridge T-22.7 (6-ton load limit) on Timber Road .7 mile east of 220 Road has sustained damage from an oversized load that broke through the deck.	The bridge is temporarily closed until repairs can be made.	New
136	Queen Road .75 mile east of 30 Road on the north side; the Ditch needs cleaned for .25 mile to 40 Road.		New
137	150 Road .17 mile north of US-36, on the west side of the road; a driveway needs improved.	Extend culvert 10ft on the south side, regrade to remove eyebrow at the entrance.	New
138	Fir Road .67 mile east of 220 Road; a culvert under the road needs replaced.		New
139	180 Road and Marble Road intersection; a sight obstruction was reported on the NW corner of the intersection.	Investigating	New
140	Rock Road .25 miles east of 90 Road on the north side; Landowner requesting a new driveway.	New 18"x30' CMP needed	New
141	At the T intersection of 90 Road and Rock Road on the west side; a driveway needs replaced.	Landowner requesting the narrow 15'x2' concrete box be removed. Replaced with a 24"x30' CMP	New
52	70 Road between US36 and Queen Road; Drainage improvements are needed on both sides of the Road	60% Completed overall.	Open
Maintenance			
50	30 Road improvements are needed to restore the crown in the roadway between Highway 36 and Fir Road.	4 miles have been completed.	Open
53	60 Road between Elm and Ash Roads needs the shoulders pulled and fortified with rock and econo-base then finished with gravel.	Improvements between Elm and Diamond are 90% complete	Open

Upcoming Events

1. Annual Report on High Banks Wind Energy/NextEra Agreement compliance issues.
2. Right-of-Way vacations for a portion of Seapo Trail in Section 21 of Grant Township and for the SW corner of Section 35 in Liberty Township (old Marble/US81 intersection ROW) are being prepared for Commission consideration.
3. The County Attorney is preparing a quit claim deed for the transfer of the Poor Farm Cemetery to the Republic County Historical Society.
4. New R&B Shop Proposal.