



Ken Robbins
Highway Administrator

702 K St.
Belleville, KS 66935
Phone: (785) 527-2235
Fax: (785) 527-5335

Weekly Report to Commissioners

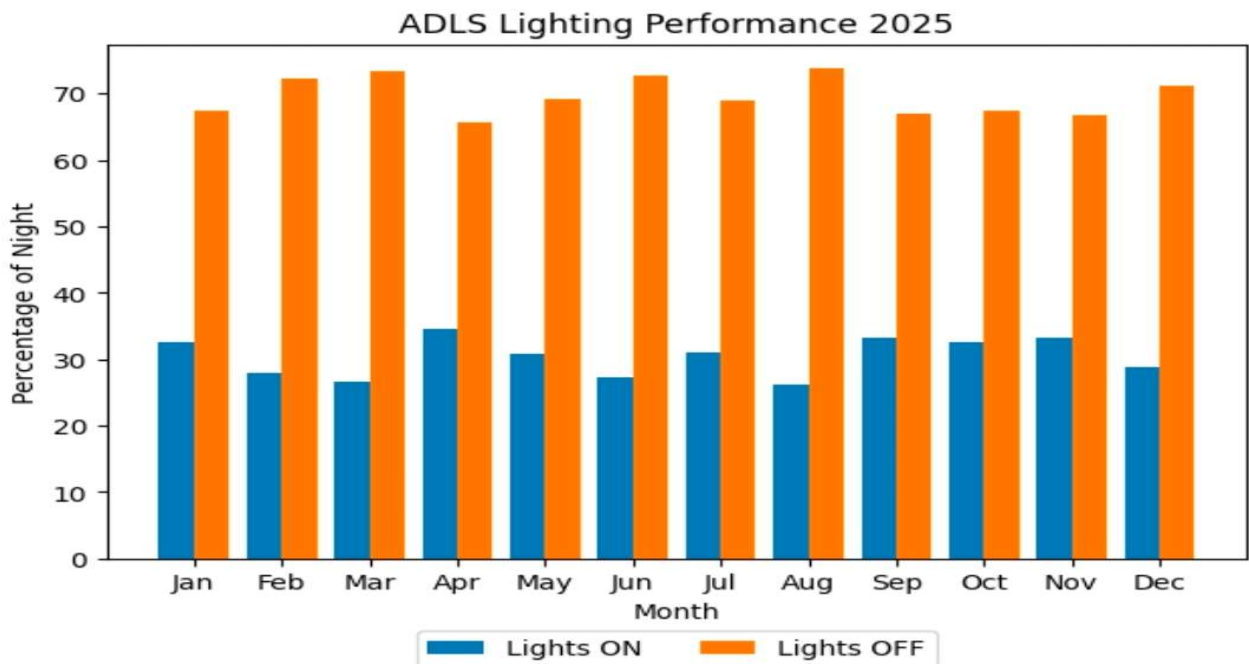
Department Reports on Non-Routine Activities

Roads and Bridges

- Freezing temperatures are putting many earthwork projects on hold until some thawing occurs.
- The Cat 12M2 motor grader for District 10 that is being re-built by Foley’s Topeka Shop will be ready for a final inspection February 10.

High Banks Wind Energy Update

- NextEra has a new Site Manager for High Banks Wind Energy in Republic County. His name is Murphy Brown. Mr. Brown reported that activity observed at tower site #32 (east of 230 Rd, north of Granite Rd) was for the replacement of a gearbox. The Annual Report is being updated with Insurance certificates and points of contact, and should be complete within a few weeks. We are reviewing submittals for that report now. Below is an image of the past year’s performance of the Aircraft Detection Lighting System which allows the lights to be off after functional testing each night when aircraft are not detected.



Community Concerns

ID	Description	Notes/Progress/Resolution	Status
Administration			
132	170 Road .0-.8 mile south of US-36; road & drainage improvements are needed.	Investigating solutions and impacts to adjacent properties	New
45	Norway Lane; drainage improvements are needed.	KDOT is preparing a scope of work to improve KS-148 that passes through the community of Norway. This should significantly improve drainage in the area. We are expecting details and a schedule by the summer of 2026.	Open
Construction			
117	Marble Road .45 mile east of 270 Road, a wood box drainage structure is damaged	Needs replaced with 48" x 40' Culvert.	Open
119	130 RD .55 West of Zeal RD South side; Trees/Brush need removed;	Utilities have been located. Landowner agrees to tree pile placement on his property.	Open
124	Talmo Lane .75 Miles North of K-148 on the West side; a Driveway needs improved and the ditch needs cleaned to stop scouring in the farmer's field.	Utility Locate completed	Open
125	100 Road .06 Miles South of Ash Road on the East side; Drainage improvements are requested to keep the water in the East Ditch.	Investigating	Open
126	290 Road 0.5 Miles North of Fir Road on the West side; Trees and brush need removed for new fence installation.	Investigating	Open
128	50 Road .08 miles south of KS-148, on the west side; a new field access is needed.	Investigating, an 18"X40' CMP is requested	Open
129	80 Road .5 miles South of Lincoln Road on the West side; Landowner requesting Trees and Brush be removed from right of way.	Supervisor noted that the Tree Mulcher would be the best plan of action for this job.	Open
130	11 Road, .06 mile south of Timber Road; Landowner is requesting a new Driveway.	New 18"X 40' CPM Requested & Driveway put in.	Open
131	230 Road .27 mile north of Queen Road on the east side; driveway improvements are needed.	Investigating	Open
52	70 Road between US36 and Queen Road; Drainage improvements are needed on both sides of the Road	60% Completed overall. Drainage improvements will continue after harvest.	Open
99	Nickel Road .01 Miles east of Riverview Lane; a crossroad culvert is plugged causing ponding on the south landowner	Utility Locate Completed	Open
Maintenance			
50	30 Road improvements are needed to restore the crown in the roadway between Highway 36 and Fir Road.	4 miles have been completed.	Open
53	60 Road between Elm and Ash Roads needs the shoulders pulled and fortified with rock and econo-base then finished with gravel.		Open

Upcoming Events

1. Right-of-Way vacations for a portion of Seapo Trail in Section 21 of Grant Township and for the SW corner of Section 35 in Liberty Township (old Marble/US81 intersection ROW) are being prepared for Commission consideration.
2. The County Attorney is preparing a quit claim deed for the transfer of the Poor Farm Cemetery to the Republic County Historical Society.
3. New R&B Shop Proposal.
4. Waste Hauling Agreement for 2026