



Ken Robbins
Highway Administrator

702 K St.
Belleville, KS 66935

Phone: (785) 527-2235

Fax: (785) 527-5335

Weekly Report to Commissioners

Community Concerns

Culvert Installation/Replacement Requests:

- Diamond Road near Farm Residence 175, requesting extension or redirection of a large diameter culvert.
 - Investigating
- Shady Road between 130 and 140 roads, farm access culvert requested.
 - Investigating
- Queen Road, ¼ mile West of 210 Road, farm access culvert requested.
 - Investigating

Other Drainage Issues:

- 40 Road ½ mile north of Fir, resident has drainage concerns and would like a site visit.
 - Need to confirm appointment.

Road Surface Concerns:

- Several Farmers in Washington Township asked for a meeting in Byron to express Road Maintenance Concerns.
 - An Operator that was highly valued by residents in this area left the county for higher wages a year ago and operators from other Districts have been stepping up recently to give the roads in this area more attention, however not in the manner they were accustomed to. The Highway Administrator and a Road Supervisor met with them and heard their concerns. Everyone understands that improvements will take some time and we announced a new hire from this area will be trained over the next 2-6 months to maintain these roads. They were pleased to hear this, and we hope he will take as much pride in his work as his predecessor.
- A resident has expressed concerns that 80 Road south of highway 36 near Scandia has never been fully restored after being damaged by a flood several years ago.
 - Investigating

Requests for Gravel:

- No new concerns

Bridge Concerns:

- No new concerns

Weed Control Concerns:

- A resident expressed concern about noxious weeds in a pasture south of Timber Road between 160 and 170 Roads. The Highway Administrator has consulted the County Attorney and has drafted notices for several landowners that demand eradication of noxious weeds or face possible fines of up to \$1,500 and reimbursement of weed control expenses if the services of the county are required. Notices are in draft form for review with the Commissioners on Monday to discuss what standard practices will be in the future.



Solid Waste Concerns:

- No new concerns

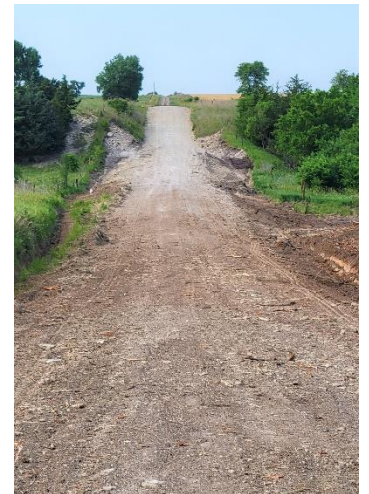
Transportation Concerns:

None

Department Reports on Non-Routine Activities

Roads and Bridges

- Pre-employment processes continue for a driver and an operator. We hope to complete the onboarding process within a week.
- A large Diameter Culvert was installed to replace a dilapidated wood box culvert on 140 Road between Shady and Rock Roads.



- 752 tons of Cold Mix have been repairs. A crew is being assembled commence within a few weeks.



received for pothole and these activities will

- PENDING ACTIONS IN COMMUNITY CONCERNS (in order of priority)

RESPONSE TO

1. Marsh Trail and 20 Road South, ditch cleaning **scheduled for week of June 21-25**. (*Collector Road; Needed after fire response filled shallow ditches with debris*).
2. Granite Road, between 70 & 80 Roads Ditch Cleaning **scheduled for week of June 21-25**.
3. 150 Road, North of Marble Road needs to be built up over the first culvert. (*Collector Road; water flows over the road*).
4. 100 Road, south of the intersection with Highway 36 will be widened about 10 feet for 200 ft to improve tractor trailer access to a new business. Ditch Cleaning on Oak west of 100 Road will also be performed and gravel added to both 100 and Oak Roads.
5. Republic County Historical Museum drainage swale and small diameter culvert will be installed between parking lot and driveway to outdoor exhibits.
6. Republic County Historical Museum 6.5 x 9 ft x 6" slab of concrete (5,000 lbs.) will be relocated from a fuel station on the property to the site of a historic jail cage, leveled and cage lowered on top of it.
7. 220 Road, between Marble and Nickle Roads, pavement cut needed to excavate and replace culvert, then patch and repair pavement. (*Culvert beneath blacktop collapsing*).
8. Jade Road, requesting north side field access culvert between 140 & 150 Roads, 100 yards west of waterway. (*Preferred location has been flagged and installation will be performed before harvest*)
9. 120 Road, South of Fir, requesting 2 farm access culverts, ¼ mile & ½ mile south of Fir. (*one culvert is a replacement for one removed during a nearby project over a year ago. The other is an expansion or replacement of an old 20ft culvert at a 30 ft gate. Both locations are flagged.*)
10. Cut and patch 4-6 ft of Concrete at 170 Road near residence 1549 (*Primary Road; Currently 23x23 & 10x23 inch potholes where previous asphalt patch has failed however potholes are shallow and should be scheduled with other pothole repairs*).
11. Fir Road, east of Residence at 2641, Ditch work needed to re-route drainage out of field and a damaged culvert replaced.
12. King Road, East of bridge K-7.2, Ditch Cleaning needed, (*Service Road*).

Solid Waste

- Repeat from last week - Delinquent Solid Waste Program Accounts are being reviewed. New penalties will be levied this year for non-payment; \$25 for Residential Accounts and \$50 for Business Accounts. Unpaid delinquent accounts will be added the property tax bill.

Transportation

- Equipment Inspection Scheduled for 6/29/21

Weed Control.

- Spraying for noxious weeds in County Right of Ways.

Upcoming Events

- The Bid opening for the Courtland to Highway 148 Overlay Project will occur on July 2. Presentation of the Bids to the Commissioners for consideration will occur on July 6. The Engineering Company of Kirkham Michael will be presenting.
 - The Engineer's estimate is \$679,000. This will be a 50/50 Cost Share Project with KDOT
 - The City has met and resolved that they would like to have the full width of the roadway milled and overlaid in the residential area south of the railroad tracks. We have estimated the additional paving will cost approximately \$24,000. Instead of delaying the project with a scope increase or requesting an alternate from prospective bidders, we will use the unit pricing in the bid schedule to negotiate a change order before construction begins. The City of Courtland will be responsible for these additional costs.
- Bidding and Construction of Off System Bridge K-7.2
 - **The Engineer has had received comments from the State Department of Transportation and presented Final Documents for the Highway Administrator's approval. KDOT has received a recommended Late Start Date from the Highway Administrator and the advertisement for Bids will be conducted by the State in July.**
 - State Department of Transportation Cost Sharing Agreement 144-21 is ready for Commissioner Approval.